

**Datasheet**  
**5803701**

**4,8W Normale Ecolux opal E27 470lm 2700K**



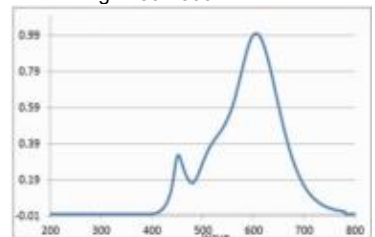
Dimmable no

Our 4.8W **Ecolux standard lamp** is our most economical LED lamp. It follows the motto of good light at an entry-level price. Our Ecolux is equipped with the latest LED technology. By removing the dimming function, it was possible to dispense with functionality that was not desired and thus offer it at an even more attractive price.

The low power consumption of the Ecolux is confirmed by its good energy efficiency class. The light source has an opalised plastic cover for shadow-free illumination. The lumen package of our Ecolux can be compared to a 40W conventional incandescent lamp.

470 lm	luminous flux [lm]
4,80 Watt	rated power
40 Watt	equivalent incandescent lighting
2700 K	colour temperature
Ra>80	colour rendering
<6 sdcms	colour consistency
240°	beam angle
E27	base
A60	outer bulb
opal	type of glass
105 mm	length
60 mm	diameter
IP20	type of protection
-20° - 40°C	temperature range in operation
0.4	power factor
230 V AC	voltage
50/60 Hz	operating frequency
42 mA	current
5 kWh/1000h	energy consumption
<1,0 s	warm-up time up to 60% of the full light output
<0,5 s	starting time
Ø 15.000 h	nominal life time
L70B50	rated life time L70/B50
0.7	lumen maintenance factor at the end of the nominal life

Spectral power distribution  
in the range 180 - 800 nm



**SIGOR**  
5803701

A

B

C

D

E

F

G

← F

5

kWh/1000h

2019/2015

as of: 23.11.2022

